

# TREETISE

SPRING 2012

## Please Appease My Trees' Disease

ROOTED IN KNOWLEDGE

VOLUME 4 | ISSUE 1

San Diego is home to diverse and beautiful trees from all over our planet. Unfortunately, San Diego is also home to tree pests and diseases from around the world as well. Our mild weather supports an exciting variety of insects, fungi and bacteria that love our trees. Insects suck and chew on different parts of a tree, depriving it of hard-earned energy, while fungi and bacteria seem to slowly dissolve a tree's supportive structures (which often results in unexpected tree failure or collapse).

We at Four Seasons Tree Care specialize in Tree Health Care (or THC), which is the task of preventing, discouraging and exterminating unwanted pests such as the Lerp Psyllid (seen here), while encouraging the presence of beneficial insects. It's our belief that an emphasis should be placed on the prevention part of that equation. Healthy trees are better at repelling pests than stressed trees and it's much easier to keep a tree healthy than to revive one that's ailing. Not only that, preventative treatments cost significantly less than having to remove and replace a dead tree.



Large mature trees are wonderful features of our urban landscape. They're a valuable asset, a considerate investment, and make a property more enjoyable for both tenants and owners. What's easy to overlook, however, is how many irreplaceable years it takes for a tree to mature! To put this in perspective, if a mature tree needs to be removed it could take another 30 to 80 years for a replacement to reach the same size. That's why we focus on providing the very best in THC services - so we can preserve and promote healthy mature trees in our urban environment.

The first step in THC is to correctly diagnose the pest or problem. The second step is to figure out how (if possible), and when, to treat for the pest. There are many options available, which include:

- Do nothing
- Encourage beneficial insects that feed on pests (Continued on page 2)

n. (tree• tis) a formal and systematic exposition of the principles of a subject; more detailed than an essay.

FOUR SEASONS TREE CARE | 760-477-7795 | WWW.FOURSEASONSTC.COM

### Message from the President

Four Seasons Tree Care has purchased and is in development of our GPS/GIS Tree Inventory and Management Software. We will be able to inventory and map your trees down to the inch with information such as: type of tree, diameter of trunk, size and spread of tree, condition of tree, maintenance needs and treatment history. We are looking forward to launching this new service toward the latter part of this year. For further inquiries please contact our office.



# TREETISE

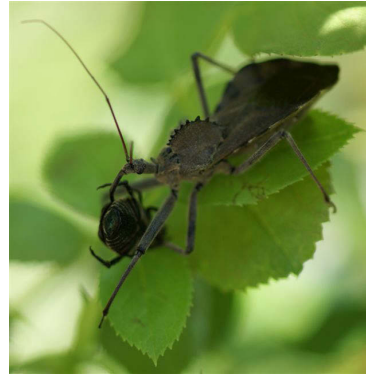
Spring 2012

ROOTED IN KNOWLEDGE

VOLUME 4 | ISSUE 1

- Spray chemicals on the entire tree
- Spray chemicals on the lower trunk
- Spread chemicals on the ground around the tree
- Inject chemicals into the ground around the tree
- Inject chemicals into the trunk

Personally, we prefer encouraging beneficial insects or injecting chemicals into the trunk. Beneficial insects such as Ladybugs, Bees, Green Lacewings and Assassin bugs (seen here) do a great job of eating pests, and trunk injections ensure the correct amount of chemical goes inside the tree, without the usual liability of spray drift, soil contamination and the killing of non-target insects.



That said, not all THC involves expensive chemicals. Trees can also benefit from cost-effective care practices: appropriate irrigation, mulching and removal of competing vegetation can significantly decrease a tree's susceptibility to fungi and pests, as well as promote beneficial insects.

To further help notify you of what pests are already here, what pests are coming, what can be done about specific pests, and when to appropriately treat for susceptible stages of any given pests' life cycle, we've created a new publication called the "Leaflet." Each Leaflet will list a tree species, a pest or problem, and our recommendation for treatment.

But in the meantime, here are some pests and fungi to keep an eye out for: Sycamore Scale and Anthracnose, Red Gum Lerp Psyllid, Goldspotted Oak Borer, Asian Citrus Psyllid, Melaleuca Psyllid (this one is new!), Armillaria (seen here), Ganoderma, and the Pine Bark Beetle, which will soon be on the increase due to our low rainfall this year.



If you would like to learn more about our THC programs, and how we can maximize the health of your valuable trees, please contact a Certified Arborist at Four Seasons Tree Care.

We are excited to announce that Kevin Rowe has taken the new position of Director of Operations and Safety within our company. In this new position Kevin is instrumental in organizing the operations of our company as the liaison between our sales team and operations manager, all the while making sure our safety program is adhered to and running as effectively as possible. Kevin's experience in project management and his excellent communication skills make him a perfect fit for heading up this department. Strengthening our safety and quality control program makes Four Seasons an even better service for you and your property, all the way from the first point of contact to the moment we complete the care of your trees.

**VOLUME 4 ISSUE 2  
OF TREETISE**

Mucho Mulch

n. (tree• tis) a formal and systematic exposition of the principles of a subject; more detailed than an essay.